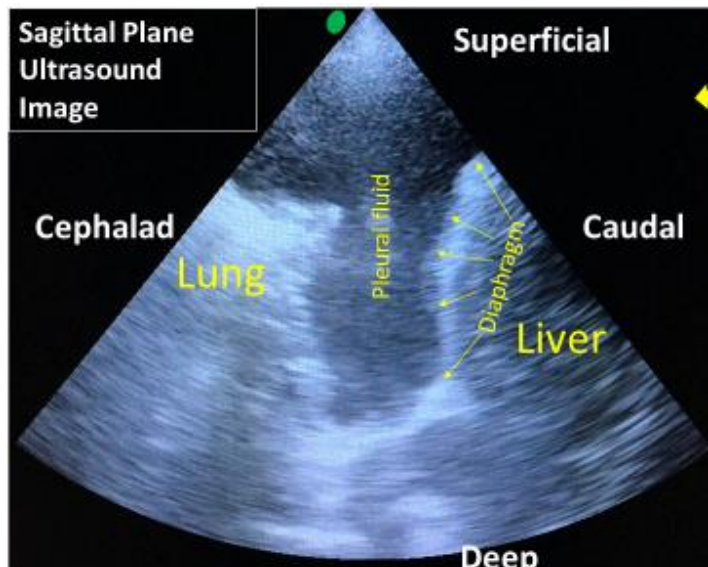


Figure 1. Typical low-frequency convex probe position on a patient with the resulting ultrasound view of a large simple pleural effusion. White labels indicate orientation of the ultrasound image and yellow labels identify structures. Note the green indicator dot on one side of the ultrasound probe, corresponding to the green dot in the upper left side of the ultrasound image. Thus, when the probe is held in this orientation, the left side of the ultrasound image is cephalad.

a.



b.

